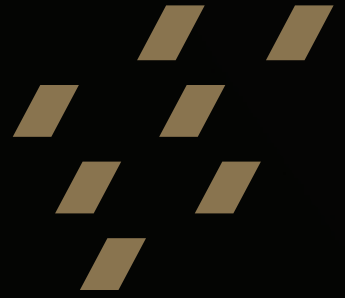


G-ænial® Universal Injectable

Discover the absolute genius behind
our strongest universal composite ever¹⁻⁸



3M™ **GÆNIAL**

Welcome to the future

G-ænia[®] Universal Injectable is a beautiful, high-strength^{1,2,4,7} universal composite, applied with the irresistible convenience of direct injection delivery. GC's ingenious composite technology heralds a new era in composite placement.

Amazing characteristics¹⁻⁸

Full-strength, beautiful aesthetics, self-polishing and porosity-free

Work faster

With direct injection delivery

High radiopacity

252%Al for optimal diagnostic contrast

Adapt, shape & contour

All at once as you inject with effortless extrusion

No wastage

Use just the amount you need

Total control

No slumping, no stringing, more stackable

It will change the way you work.



Truly Universal Application

G-ænial® Universal Injectable is suitable for the entire range of cavity classifications and more.



Class I



Class II



Class III



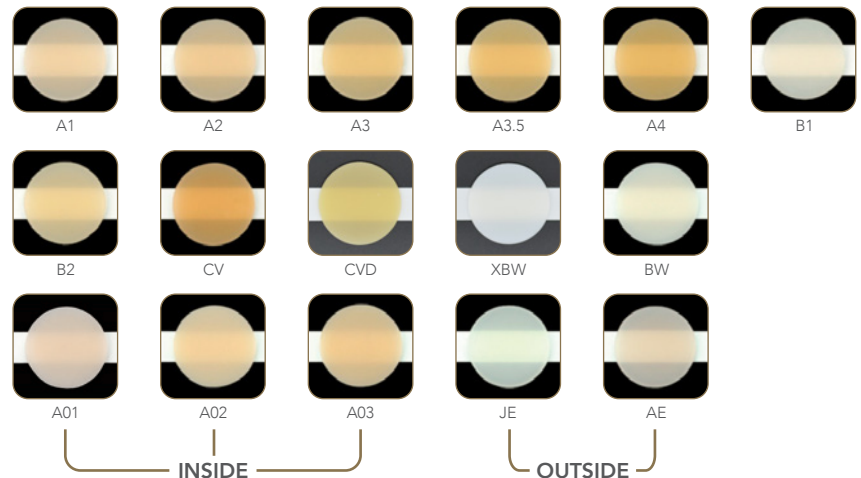
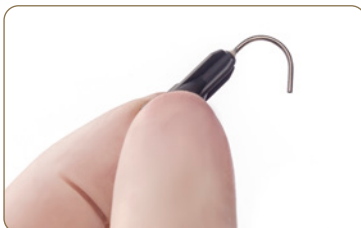
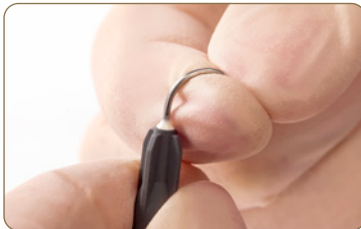
Class IV



Class V

Universally Satisfying

The tip design gives you the flexibility to adjust tips to suit every application for superior cavity adaptation, faster application and greater control. Two sizes – infinite shapes. Highly aesthetic restorations can be achieved using a single shade or multi-shade layering technique.

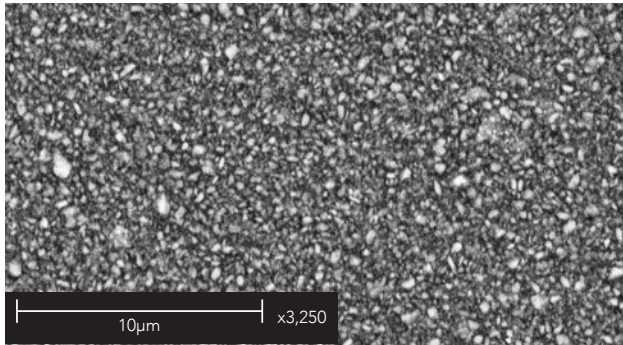


Universally Superior Technology¹⁻⁵

G-ænial® Universal Injectable features 150nm glass fillers densely packed and individually silane-bound within a hydrophobic resin in an injectable consistency. The heightened structural density of G-ænial® Universal Injectable is the foundation for its universally superior physical properties.¹⁻⁵

G-ænial® Universal Injectable

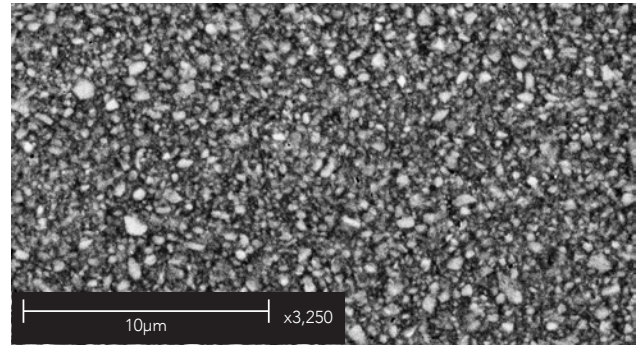
Features 150nm homogeneously dispersed fillers



SEM picture of G-ænial Universal Injectable Composite Magnification: X3250.
Source: GC R&D Data. Data on file available from info.australasia@gc.dental.

G-ænial® Universal Flo

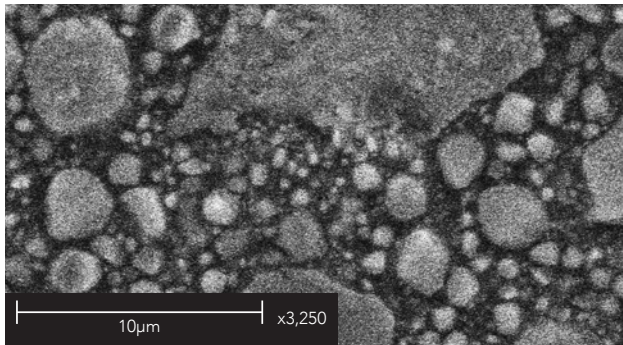
Contains 200nm homogeneously dispersed strontium glass fillers



SEM picture of G-ænial Universal Flo Composite Magnification: X3250.
Source: GC R&D Data. Data on file available from info.australasia@gc.dental.

Product A – Clustered Nano-filled Composite

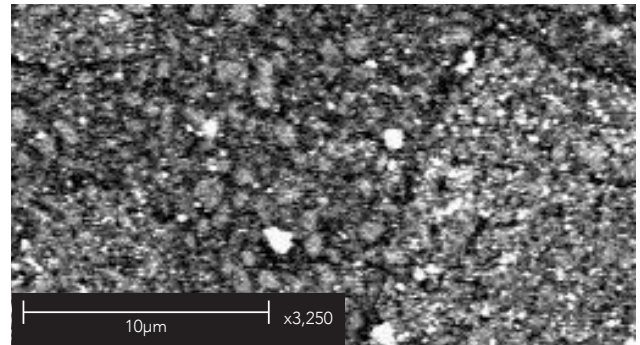
Typically contains spherical nano clusters made up of agglomerated nano fillers of varying size



SEM picture of Clustered Nano-filled Composite Magnification: X3250.
Source: GC R&D Data. Data on file available from info.australasia@gc.dental.

Product B – Micro Hybrid Composite

Typically contains a range of glass and nano fillers of varying sizes

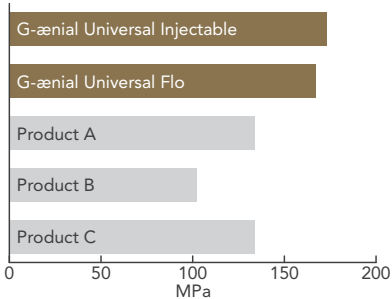


SEM picture of Micro Hybrid Composite Magnification: X3250.
Source: GC R&D Data. Data on file available from info.australasia@gc.dental.

G-ænial® Universal Injectable

Universally superior properties¹⁻⁵ are all achieved through innovative manufacturing techniques which accentuate GC's full-coverage silane coating (FSC) technology.⁶⁻⁸

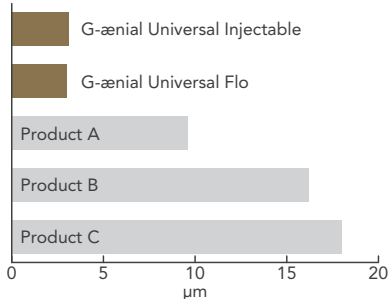
Superior Flexural Strength



Source: GC R&D, Japan (2018).

Data on file: [ISO4049:2009 Flexural Strength/energy] available from info.australasia@gc.dental.

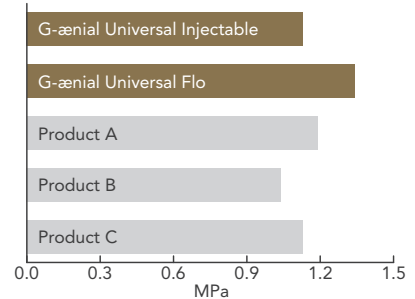
Wear resistance



Source: GC R&D, Japan (2018).

Data on file: [ISO4049:2009 Three-body wear] available from info.australasia@gc.dental.

Shrinkage stress (comparison to bulk fill resins)



Source: GC R&D, Japan (2018).

Data on file: [ISO4049:2007 Polymerisation Shrinkage] available from info.australasia@gc.dental.

Superior Wear resistance and polish retention⁶⁻⁸

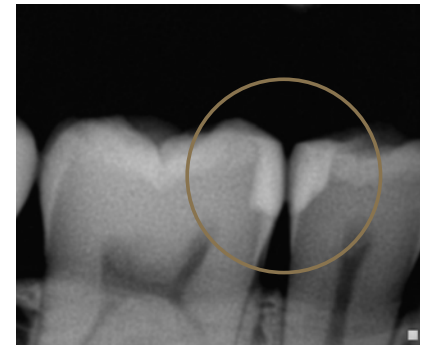
Individually dispersed 150nm sized fillers used in G-ænial® Universal Injectable provide greater wear resistance⁷⁻⁸ and improved polish and polish retention.⁶



Before
Courtesy of Dr Clarence Tam, New Zealand.



After



Courtesy of Dr Yo-Han Choi, Australia

Clinical Observations

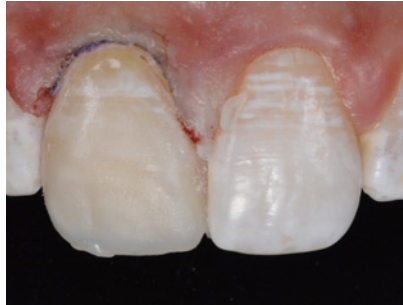
Case 1: Class IV Restoration

Courtesy of Dr Anthony Mak, Australia

Complex class IV build up using 2 shades and Essentia white modifier.



1. Before – large class IV fracture on an adolescent patient.



2. Opaque layer shade A02 placed, followed by enamel shade JE.



3. Polished final result – Harmonious restoration of a complex class IV restoration using an injectable composite in 2 shades.

Case 2: Posterior Occlusal Wear

Courtesy of Dr Anthony Mak, Australia

Management of the “early worn dentition”.



1. Early wear evident on 40-year old patient needing conservative management.



2. Old composite restorations removed and teeth micro-etched. Build up and restorations on the occlusal surface using alternate teeth technique.



3. Final restorations using a single shade injection technique, shade A1.

Case 3: Class II Restoration

Courtesy of Dr Javier Tapia Guadix, Spain



1. Removal of the old restoration and caries removal.



2. Building the proximal wall using the enamel shade JE. A Class I procedure can now be followed; the dentine layer was created with shade A4.



3. 3-month review.

Case 4: Lower Anterior Wear and Class V Restorations

Courtesy of Dr Anthony Mak, Australia

Full-incisal build up and cervical lesions with single shade.



1. Pre-operative showing lower incisal wear and cervical lesions requiring conservative restorations.



2. Full build up and VDO increase of lower incisors using a single shade and cervical lesions requiring restorations.



3. Final conservative management of different types of restorations using a single shade.

G-ænial® Universal Injectable



Packages:

1 Syringe Pack

- 1x Syringe 1.7g (1.0mL)
- 5x Dispensing Tip Needle
- 5x Dispensing Tip Long Needle
- 1x Light-protective Cap

2 Syringe Pack (available in shades A1, A2, A3)

- 2x Syringe 1.7g (1.0ml)
- 10x Dispensing Tip Needle
- 10x Dispensing Tip Long Needle

Dispensing Tip Refill

- 20x Dispensing Tip Long Needle

Shades:

- XBW, BW, A1, A2, A3, A3.5, A4, B1, B2, CV, CVD, AO1, AO2, AO3, JE, AE

G-ænial® Universal Flo



Shades:

- A1, A2, A3, A3.5, A4, BW, B1, B2, B3, C3, CV, AO2, AO3, AE, JE

G-ænial® Flo X



Shades:

- A1, A2, A3, AO2

- Carrabba et al (2019). Injectable Resin Composite, Preliminary Clinical Report: 1 Year Follow-Up. J Dent Res Vol 98 (Spec Iss B): 0604. <https://iadr.abstrachtrchives.com/abstract/19iags-3183775/injectable-resin-composite-preliminary-clinical-report-1-year-follow-up>
- Corsetino G, Ferrari M. (2020). Clinical Report of Class II Restorations Made Using an Injectable Resin Composite. J Dent Res J Dent Res Vol 99 (Spec Iss A): 1383. <https://iadr.abstrachtrchives.com/abstract/20iags-3322298/clinical-report-of-class-ii-restorations-made-using-an-injectable-resin-composite>
- Olivier et al. (2019). Gloss Retention of Direct Composites and Corresponding CAD Composite Blocks. J Dent Res Vol 98 (Spec Iss B): 3136. <https://iadr.abstrachtrchives.com/abstract/19iags-3185252/gloss-retention-of-direct-composites-and-corresponding-cad-composite-blocks>
- Echevarria et al. (2020). Adhesive Interface and Chemical Composition of Nanoparticulate Composite Universal Injectable. J Dent Res J Dent Res Vol 99 (Spec Iss A): 0746. <https://iadr.abstrachtrchives.com/abstract/20iags-3307659/adhesive-interface-and-chemical-composition-of-nanoparticulate-composite-universal-injectable>
- Francois et al (2019). New Universal Flowable Composites: Mechanical and Structural Analysis. J Dent Res Vol 98 (Spec Iss B): 2504. <https://iadr.abstrachtrchives.com/abstract/19iags-3181532/new-universal-flowable-composites-mechanical-and-structural-analysis>
- Olivier et al. (2019). Gloss Retention of Direct Composites and Corresponding CAD Composite Blocks. J Dent Res Vol 98 (Spec Iss B): 3136. <https://iadr.abstrachtrchives.com/abstract/19iags-3185252/gloss-retention-of-direct-composites-and-corresponding-cad-composite-blocks>
- Echevarria et al. (2020). Adhesive Interface and Chemical Composition of Nanoparticulate Composite Universal Injectable. J Dent Res J Dent Res Vol 99 (Spec Iss A): 0746. <https://iadr.abstrachtrchives.com/abstract/20iags-3307659/adhesive-interface-and-chemical-composition-of-nanoparticulate-composite-universal-injectable>
- Francois et al (2019). New Universal Flowable Composites: Mechanical and Structural Analysis. J Dent Res Vol 98 (Spec Iss B): 2504. <https://iadr.abstrachtrchives.com/abstract/19iags-3181532/new-universal-flowable-composites-mechanical-and-structural-analysis>

PRODUCTS ON THIS PUBLICATION ARE NOT AVAILABLE FOR PURCHASE BY THE GENERAL PUBLIC. ALWAYS READ THE LABEL AND FOLLOW THE DIRECTIONS FOR USE.



Since 1921
Towards Century of Health

GC Australasia Dental Pty Ltd
1753 Botany Road Banksmeadow
NSW 2019 Australia

T: +61 2 9301 8200
E: info.australasia@gc.dental
www.gc.dental/australasia